

Pembroke III

FROM WINDSOR HOMES



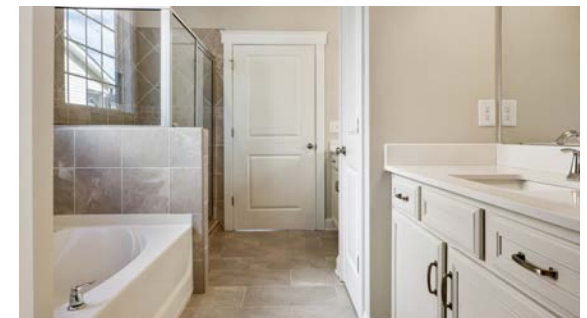
Elevation B

Ranch plan with 2 Bedrooms and 2 full Baths. Primary Suite has option for angled tray ceiling. Primary Bath includes dual sinks and private toilet closet. Huge walk in closet! Option for Bonus Room / 4th Bedroom over the Garage add 345 - 499 square feet. Option for full bath in Bonus Room. Large Great Room adjacent to the Kitchen. Formal Dining Room is standard or option for a 3rd bedroom on the main floor. Kitchen has eat at island open to Great Room. Fireplace in the Great Room is Optional. Covered Porch is Standard with options for Morning Room, Screened Porch or Study. 2 car garage.

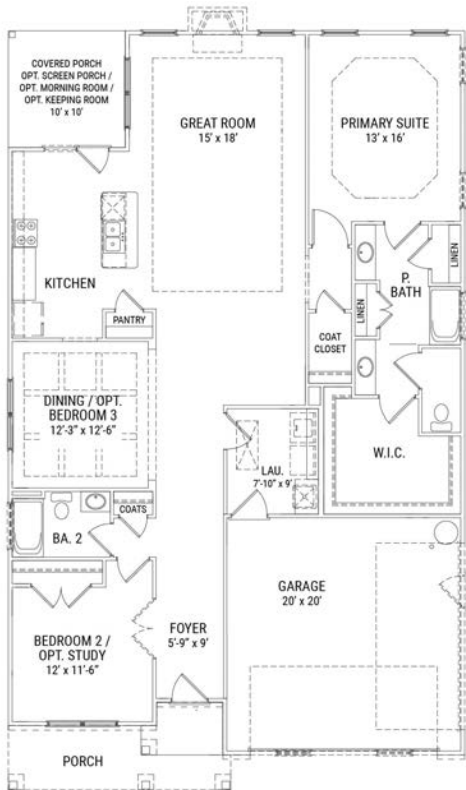
www.WindsorHomes.US

Interior Features

- ◇ Dual Sinks and Toilet Closet in Primary Bath
- ◇ Huge Walk In Closet
- ◇ Options for 2 Extra Bedrooms
- ◇ 2 Car Garage
- ◇ *More On Our Website!*



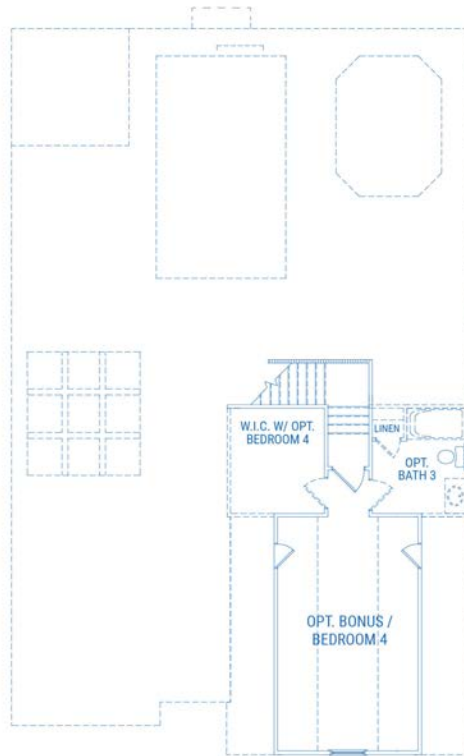
First Floor



Options:

- ◇ Bedroom 3
- ◇ Primary Bath Deluxe Upgrade
- ◇ Stairs w/ Opt. Bonus/Bedroom 4

Second Floor



Options:

- ◇ Optional Bedroom 4 w/ Opt. Bath 3

Pembroke III

WINDSOR HOMES

Discover the Pembroke III Floorplan

Interior and Exterior Features,
Floor Plans and Options,
Exterior Elevations, and more!



www.WindsorHomes.US

Visit our website for **interactive floor plans** and additional information! WindsorHomes.US

*Floor plans, renderings, exteriors, and landscaping shown are for illustration purpose and are not part of a legal contract. We are constantly improving our homes and reserve the right to revise plans, exteriors, and specifications without notice or obligation. Floor plans may vary slightly with selected exteriors. See your Windsor Homes sale representative for details on available upgrades and features.
Brochure version 5/4/2023.